



WORLD LEADER IN
FIRE SUPPRESSION TECHNOLOGY

Engineered Fire Suppression System N-Series

SB-022 REV A SFE

Fire-Hawk N-Series Custom-Engineered Fire Suppression Systems protect spaces from 1,500 cu ft (42.5 cu m) up to 17,500 cu ft (500 cu m) and provide reliable and responsible economical solutions that protect server rooms, electric cabinets, manufacturing - C&C machinery, power generation, records storage, and more.

Systems are fully customisable and available with versatile options such as the ERS (Extinguisher Release System), Triton II addressable panel, and other compatible conventional and addressable panels. Fire-Hawk engineered systems are tested and approved in accordance with UL & FM requirements.

Applications include

- Clean Rooms
- Server Rooms
- Electric Cabinets
- Industrial Processes
- Manufacturing
- Power Generation
- Records Storage

Product features

- Each system is fully customisable and available with versatile options to fit various applications
- Numerous methods of system actuation
- Tested in accordance with UL & FM
- All cylinders are refillable and meet U.S. D.O.T., TC, and/or CE/TPED

FK-5-1-12

- People safe at design concentration
- Environmentally responsible [no ozone depletion + GWP (global warming potential) of less than 1]
- Globally accepted
- Not damaging to equipment and machinery
- No clean-up after discharge



System specifications

- Powder coated steel cylinders resist dents and scratching
- Reaches extinguishing levels in 10 seconds or less
- Cylinders use mechanical valve to facilitate discharge of agent
- System pressurised to 360 PSI @ 70°F (21°C)
- Operating temperature range: 32°F to 130°F (0°C to 55°C)

www.fire-hawksafety.com

Fire-Hawk Safety
a division of Metalcraft Inc.

Unit D2 Discovery, Voyager Park, Portfield Road, Portsmouth, PO3 5FN, UK
+44 (0) 2392 679666 • info@firehawksafety.com

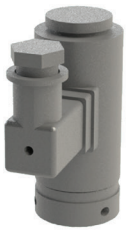
9351-G Philadelphia Road, Baltimore, MD 21237, USA • +1 410 687 5500

Engineered Fire Suppression System

N-Series

Methods of actuation

Electric Solenoid



Manual Pneumatic



Control Panels



System model chart

Model	Liter Capacity	Cylinder Tare Weight	Agent Fill Range	Diameter	Valve Size
N-20	8L	14.7 kg	4 kg - 9.5 kg	25.4 cm	2.54 cm
N-40	16L	18.4 kg	8 kg - 19 kg	25.4 cm	2.54 cm
N-75	32L	26 kg	16 kg - 38 kg	25.4 cm	2.54 cm
N-120	52L	49.1 kg	26 kg - 62 kg	40.64 cm	5.08 cm
N-240	106L	71.8 kg	53 kg - 127 kg	40.64 cm	5.08 cm
N-325	147L	89.9 kg	74 kg - 147 kg	40.64 cm	5.08 cm
N-400	180L	105.7 kg	90 kg - 208 kg	40.64 cm	5.08 cm

Approvals

